

Fold structures

710'000

715'000

1:20'000



0

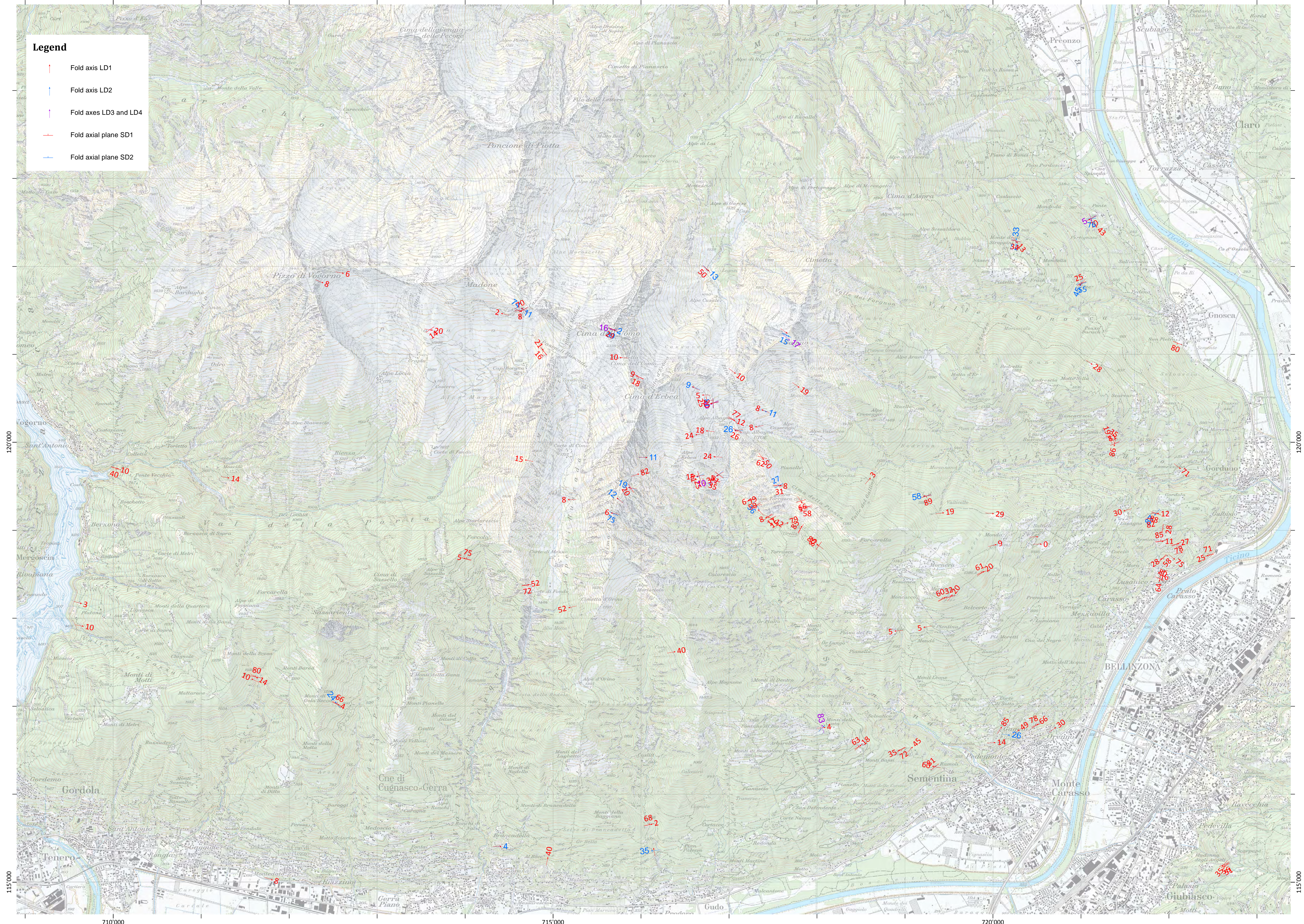
720'000

2'000

4'000 Meters

Legend

- Fold axis LD1
- Fold axis LD2
- Fold axes LD3 and LD4
- Fold axial plane SD1
- Fold axial plane SD2



120'000

120'000

115'000

115'000

710'000

715'000

720'000